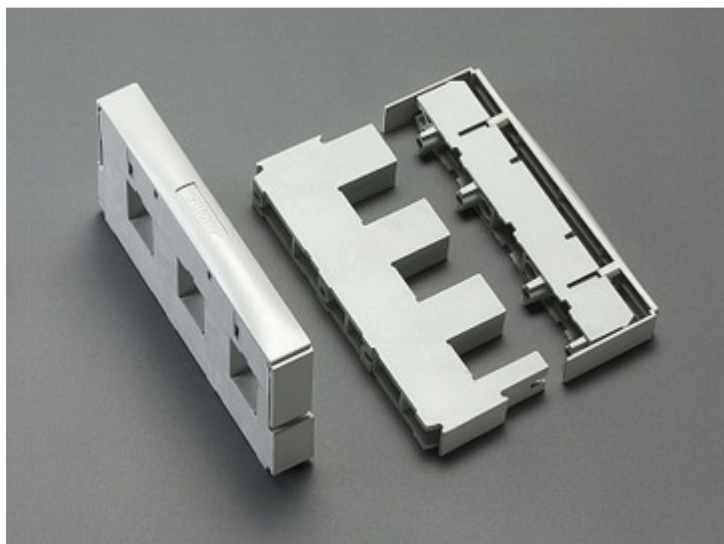


busbar support (01 231)



Description

Article

Part No.: 01 231

busbar support

3-pole, with internal screw holes

for double T profile

System

60Classic

Product group 06

Subgroup 09

pack size 3

EAN 4021267012311

Advantages of the product

Suitable as outer and centre supports
with internal screw holes.

Catalog page 2015 : 2/3, 2/35

eCl@ss 6.1 27400607
eCl@ss 7.1 27400607
ETIM 4.0 EC001166
ETIM 5.0 EC001166

Approvals

Standards

IEC 61439-1:2011

Approvals

CSA, UL, Germanischer Lloyd



for UL feeder circuits >250V

Type number: S630-L

UL file: E123577, UL category (for USA): NMTR <http://www.ul.com>

UL file: E123577, UL category (for Canada): NMTR7 <http://www.ul.com>

CSA file: 110285, CSA class: 3211-37 <http://directories.csa-international.org>

CCC approval: no certification required

Product data

Electrical data

Rated voltage (IEC) AC: 690 V

Rated voltage (UL) AC: 600 V

Power dissipation:

The power dissipation at a typical load of 80% of the rated current results to 0 W.

(The power dissipation for operation with rated current would be 0 W.)

Rated surge voltage U_{imp} : 8 kV

max. permitted voltage (IEC) AC: 1000 V

max. permitted voltage (IEC) DC: 1500 V

short-circuit capacity IEC / EN :

I_{pk} = min. 51kA (2 busbar supports in 900mm distance)

go to calculation for [3-pole system \(IEC\)](#)

short-circuit capacity UL :

SCCR = 25kA (2 busbar supports in 700mm distance)

go to calculation for [3-pole system \(UL\)](#)

increased short-circuit capacity UL by [protective devices](#)

Mechanical data

W x H x D: 25 x 200 x 123

Weight: 59.1 kg/100

Poles: 3-pole

for busbars: double-T section

Material properties

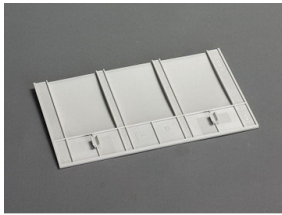
Main body: temperature stability 125°C,
self-extinguishing in acc. to UL 94,
creepage resistance CTI 200,
halogen-free

Screws: screw +/- (PZ2), galvanized, chromized

Reference

Torque for the screws of the busbar support $M_d = 4\text{Nm}$

Accessories



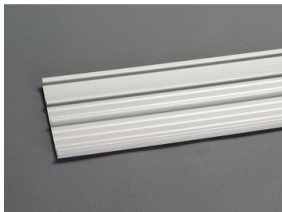
01 234
end cover
for busbar supports 01 231 and 01 232



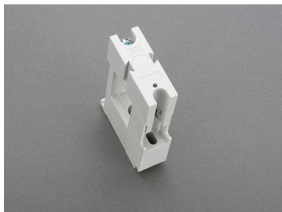
01 236
compartment section
2400 x 48



01 237
compartment section
2400 x 76



01 238
compartment section
2400 x 106



01 116
busbar support
1-pole, for connection to 01 231 and individually mountable
for double T profile